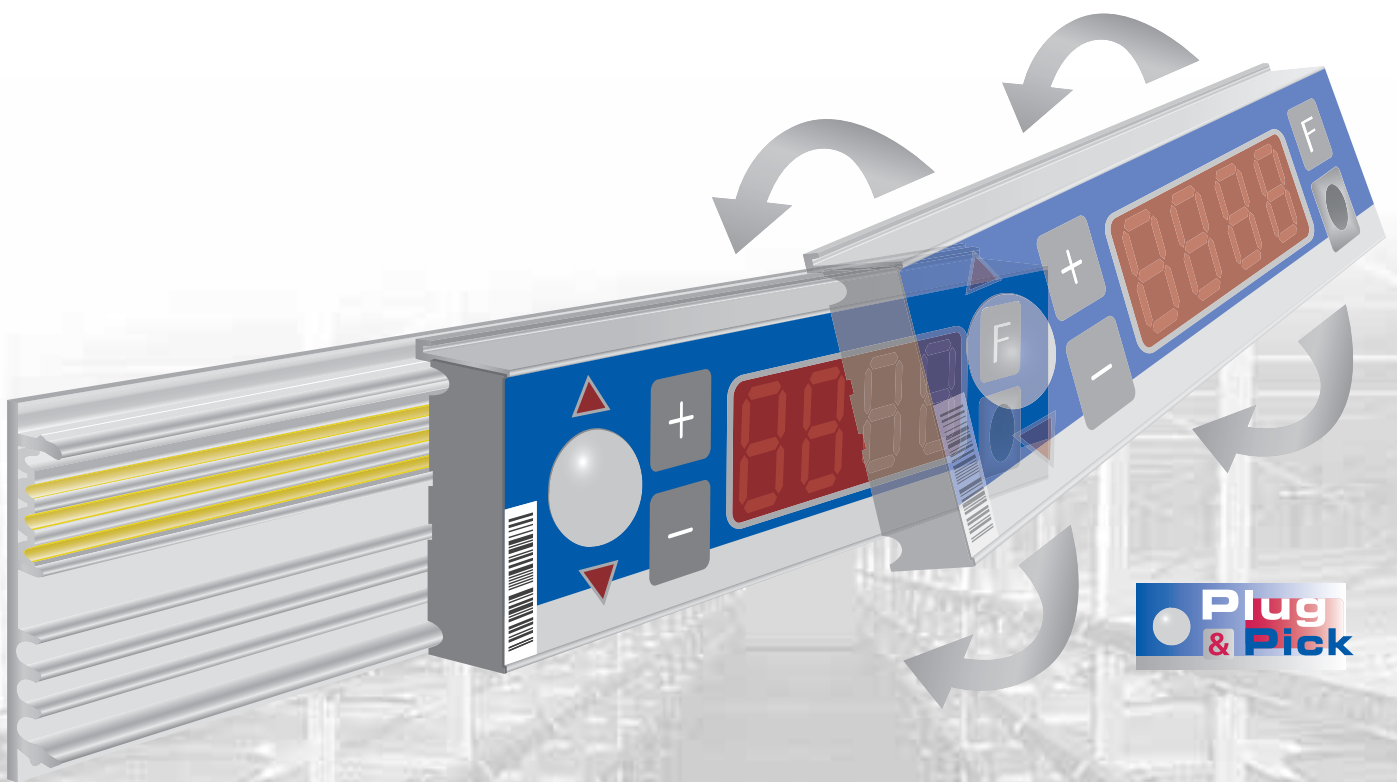


Paperless

commissioning with

PickTerm

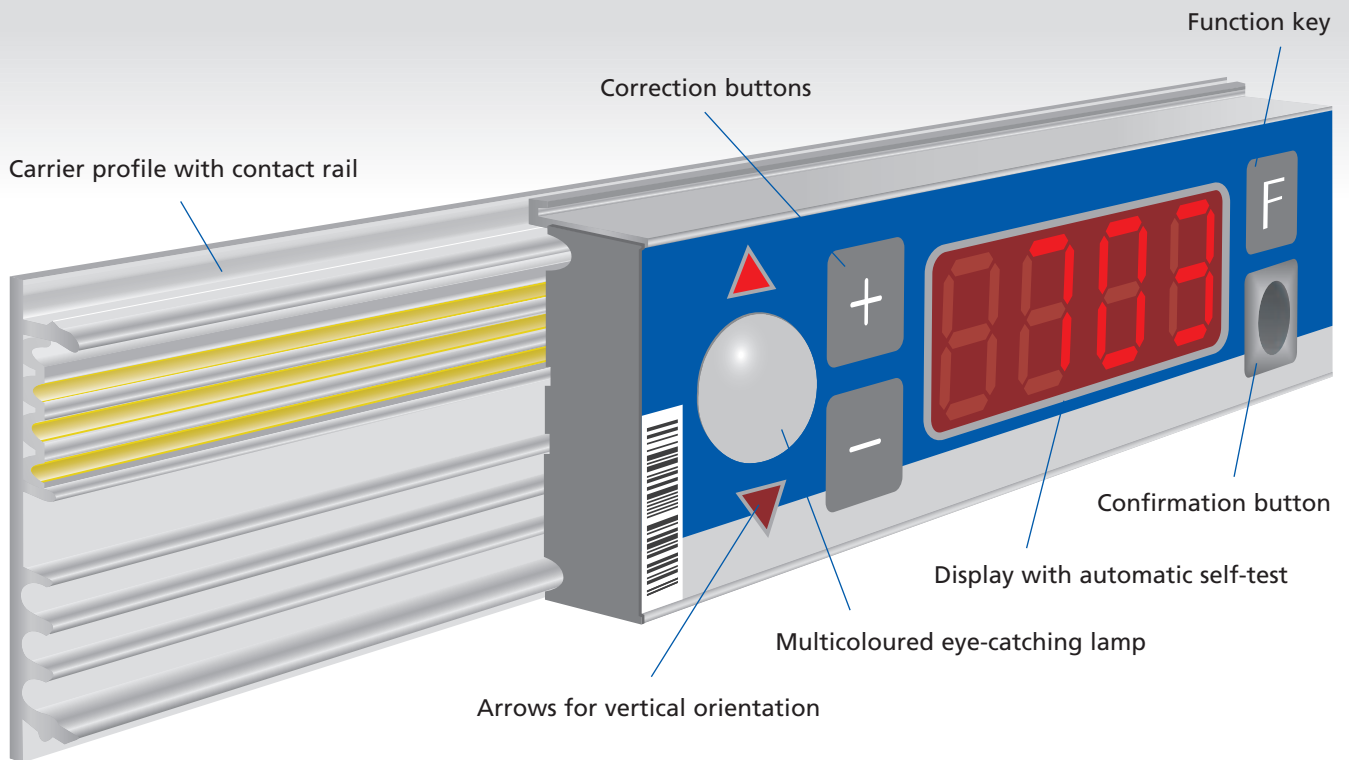
Flexible



KBS Industrieelektronik GmbH **KBS**


PickTerm

Flexible



- Flexible adaptation to the rack compartments by means of 
- Multicoloured eye-catching lamp
- Automatic self-test of the lamps and displays
- Automatic configuration
- Correction buttons
- Long travel confirmation button
- Freely definable function key
- Acoustic signal transmitter
- Arrows for vertical orientation (top, bottom)
- Applicable in deep-freeze area
- Customized display types



The system **PickTerm** can be optimally adapted to the corresponding requirements. Whether for the order picking of merchandise in logistics or for the supply of material in production, this system can meet any requirement. Thanks to the snap-in adaptation, rack compartments can be arranged in a flexible and easy-to-modify way. Fast-selling warehouse items requiring a lot of room today may be less in demand tomorrow. With **PickTerm** you are always prepared. The compartment displays can be inserted into the profile in any position. The mounting profile fastened to the shelf includes a contact rail used to connect the compartment displays. The compartment displays are plugged on without the need for a tool = .



Configuration and extension of the system is easy and safe due to the automatic component detection **Plug & Pick**. Each compartment display can be replaced during operation without losing an active commissioning position. Even other devices such as scanner interfaces can be inserted into the profile in any position. Identification is effected automatically without intervention of the operator.

Multicoloured eye-catching lamp

A multicoloured eye-catching lamp has been integrated to obtain maximum flexibility. With this eye-catching lamp it is possible to process several orders in one zone. A certain colour is assigned to each picker. When the eye-catching lamp lights up in a certain colour (e.g. red), the "red" picker will know, that this is his pick. These multicoloured eye-catching lamps can also be used to indicate different states (e.g. stocktaking in the compartment).

Acoustic feedback

An acoustic signal transmitter has been integrated to improve the "pick feeling". This signal indicates for example that the OK button has been pressed. This function is very helpful with high picking frequencies since an acoustic signal informs the picker that the OK button has been pressed. The picker saves time since he does not have to check the display after acknowledgement.

Zone management

A flexible zone management allows the adaptation to different rates of utilisation. The size and number of zones can be adapted dynamically to the volume of work.

Orientation arrows top/bottom



As an option, the compartments can be equipped with two illuminated arrows. These arrows inform the picker whether the pick is to be effected from a warehouse compartment above or below the display. In shelves including several levels, the picker can reliably localize the correct level with the help of these arrows.

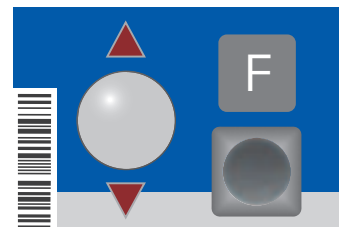
Automatic self-test

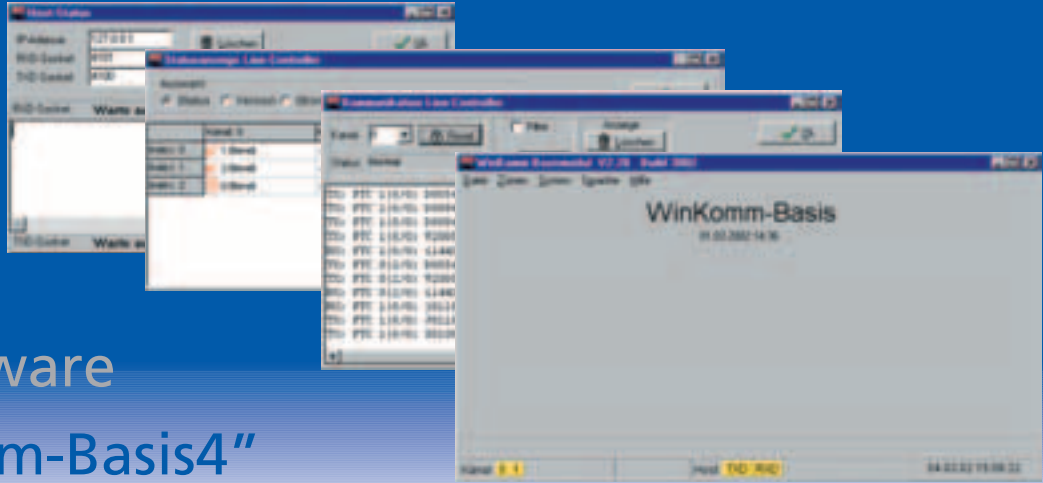


The automatic self-test checks the correct functioning of each individual lamp and display segment. This avoids faulty data display. During normal operation, the automatic self-test is effected continuously. Any malfunction is signalled to the host system.

Customized rack displays

In addition to our standard displays, customized variants are possible at any time. With **PickTerm**, customized displays can be developed with little expenditure. The development of customized displays is sensible when the available displays cannot cover the required functionality by 100 %. OEM variants with customized layout are also easily possible.



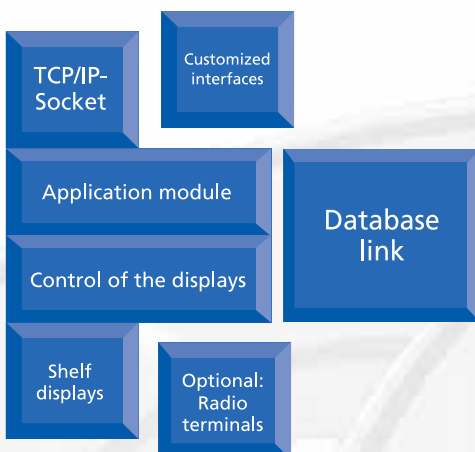


Basic software "WinKomm-Basis4"

This software module includes the basic functions of the Systems **PickTerm** Flexible system.

- Names specified by the customer are assigned to the compartment displays
- Order transfer via TCP/IP socket interface
- Order handling with special functions, such as quantity correction, zero quantity control
- Zone management
- Maintenance and diagnostic functions for the maintenance personnel
- Additional functions such as counting aid, indication of end of order
- Several languages available
- Easy to use programming interface

Thanks to the open interfaces, extension by additional modules and functions is possible at any moment. In many cases, the functionality of the basic software WinKomm-Basis4 is sufficient to put a system for paperless picking into practice. Sometimes, system-specific processes and functions are required that cannot be included in a standard module. These processes and functions are implemented in an application specific software module. Other interfaces to a host system e.g. a direct database connection can be implemented very easy. This application specific software module is located between the host system (WMS) and the WinKomm-Basis4 module. In addition to these two modules, modules such as inventory management and material flow computers are available.



KBS
KBS Industrieelektronik GmbH
Burkheimer Straße 3 · D - 79111 Freiburg
Tel. +49 (0) 761 / 4 52 55-0 · Fax 4 52 55-90

E-mail and Internet: kbs@kbs-gmbh.de
www.pickterm.com · www.kbs-gmbh.de